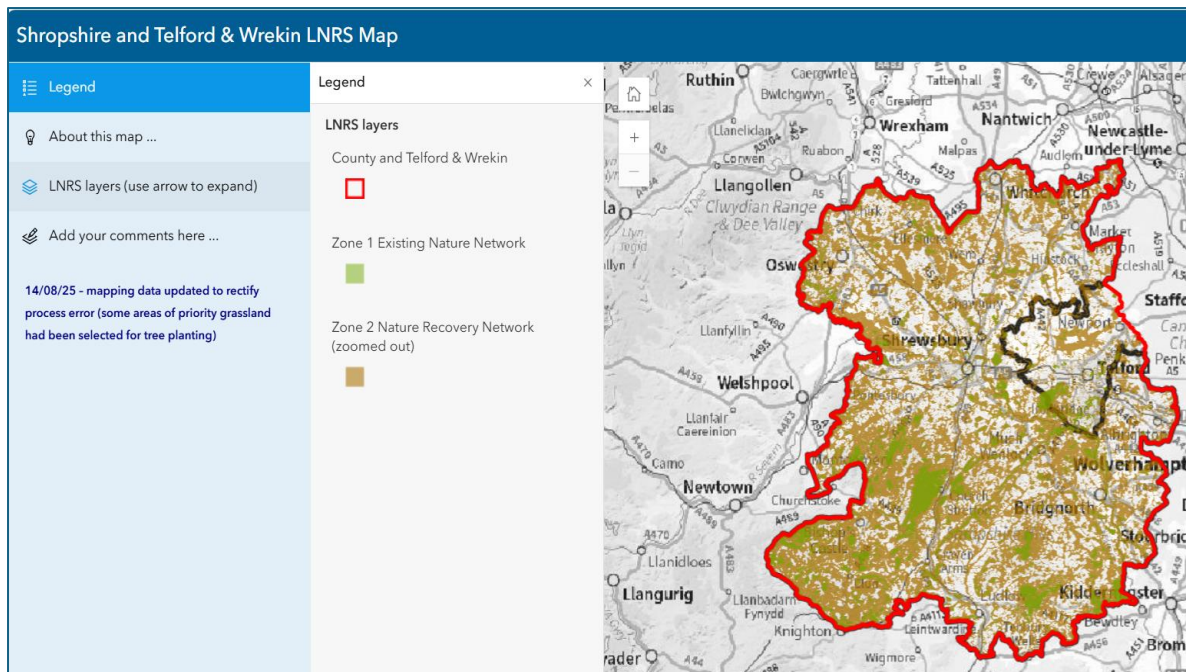


Creating an entry on the LNRS map

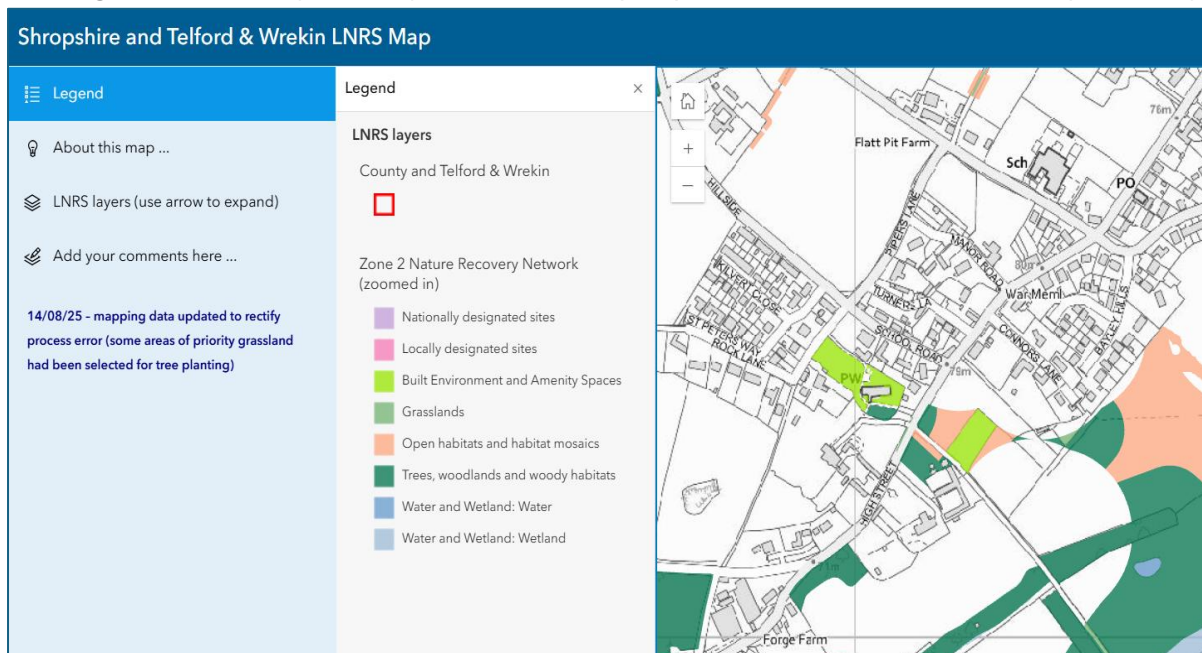
Go to the map. [Shropshire and Telford & Wrekin LNRS Map](#)

Once the map has opened you will see this.



Using your mouse move deeper into the map by pressing the + or minus arrow having got to your locality. Zoom into or click on the drop down menu in the blue box on the left side of the screen.

Clicking on the LNRS layers and you see a desktop depiction of the content of the map currently.

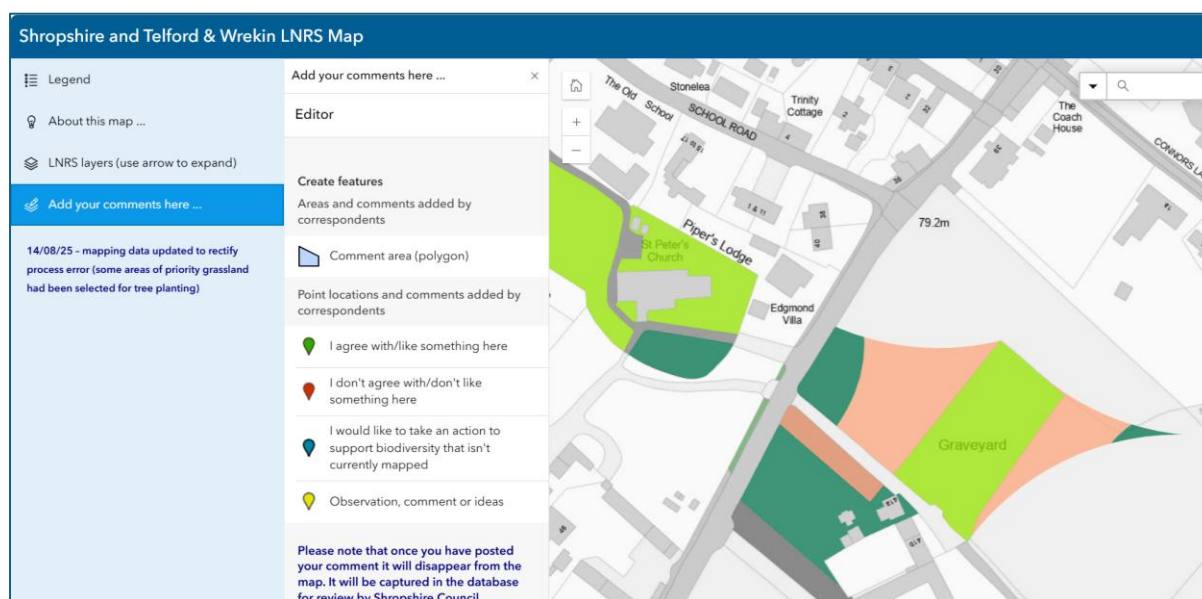


This content looks to have detail missing or is simplistically generalised.

This is the “Ground Truthing” and this why the content needs people to make comments or add features that exist as green spaces both for amenity use and those proposed for nature recovery, etc.

To make any comment

Click on the drop down menu in the blue box on the left side of the screen. Highlighting a blue box will open a further Editor box for you enter your comment or to create a green space area for nature.



You have in the Editor Box several choices to choose from.

There are 4 main themes for comment and an is required to be chosen and placed on the map and your comment made according to the letter count.

Select from the menu what you wish to add to the LNRS map.

Zoom in further to enable you make a comment or start to draw a polygon.

Select a Comment Icon and place it on the map and the following box appears seeking the following information and letter count for the respective response. Then submit by pressing the create button. Your icon and content will now disappear from the map.

Shropshire and Telford & Wrekin LNRS Map

Legend

About this map ...

LNRS layers (use arrow to expand)

Add your comments here ...

14/08/25 - mapping data updated to rectify process error (some areas of priority grassland had been selected for tree planting)

Add your comments here ...

Editor

Create features

Areas and comments added by correspondents

Comment area (polygon)

Point locations and comments added by correspondents

I agree with/like something here

I don't agree with/don't like something here

I would like to take an action to support biodiversity that isn't currently mapped

Observation, comment or ideas

Please note that once you have posted your comment it will disappear from the map. It will be captured in the database for review by Shropshire Council.

Comment

0/255

Extra information

0/255

Please tell us why you would like something different, your authority (e.g. are you the landowner?) or organisation

What action are you already taking?

0/255

Please tell us of anything that you / your organisation is already doing in respect to this location

Address line 1

Address line 2

Address line 3

Postcode

Please note that once you have posted your comment it will disappear from the map. It will be captured in the database for review by Shropshire Council.

Create

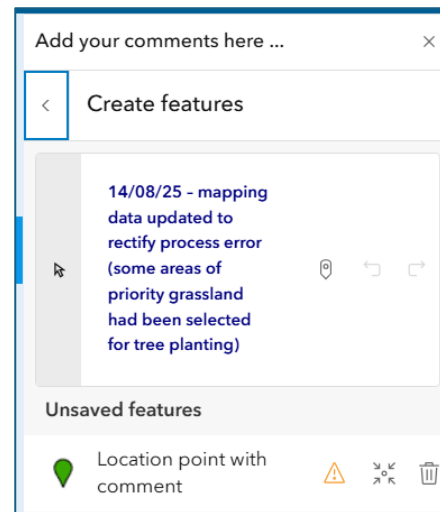
To create a feature on the map such as a field or green space you will need to create a polygon drawing.

You can discard your entry by simply, pressing the

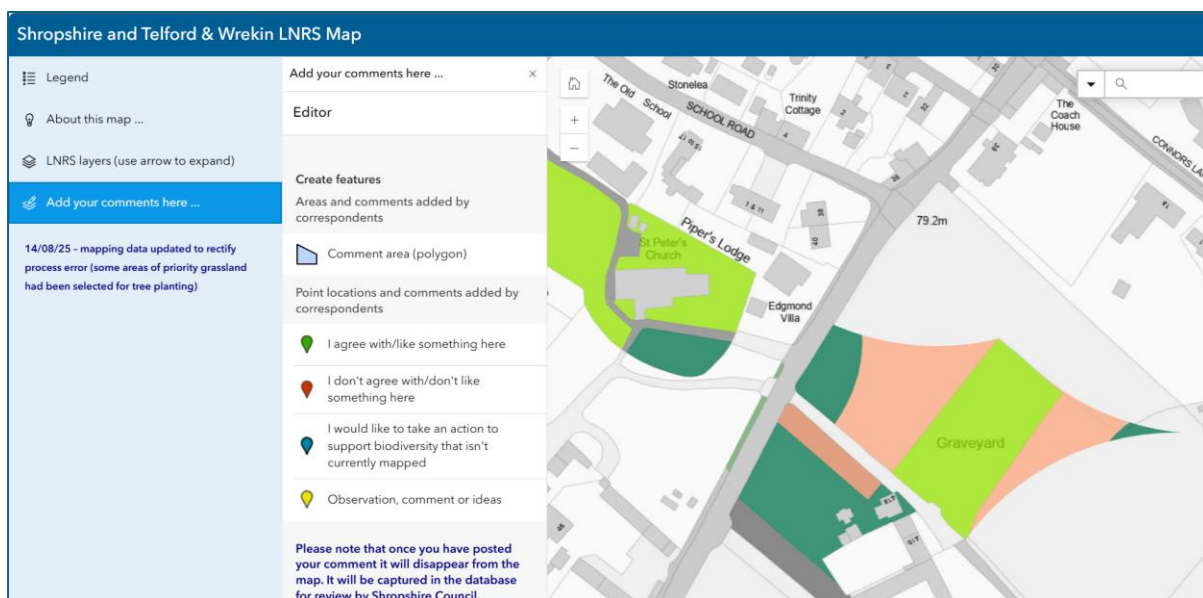
Highlighted back arrow or by pressing the trash can icon.

It will ask you to confirm and that will delete the entry you started.

This process applies to all elements of the comment and polygon sections.

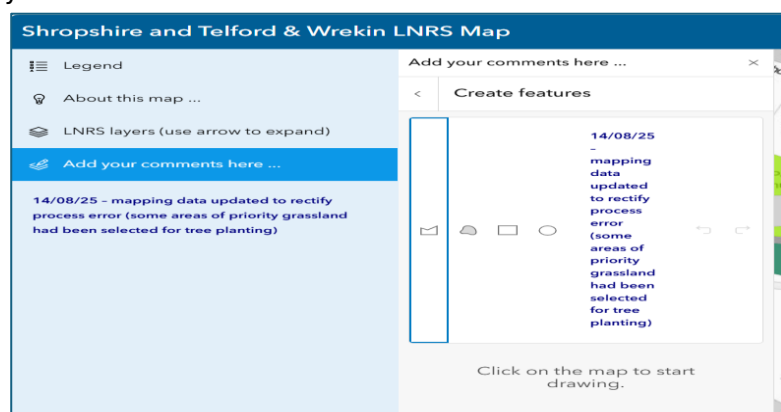


To create an area designated or intended for use as a green space for nature click and highlight the ‘Comment area (Polygon)’



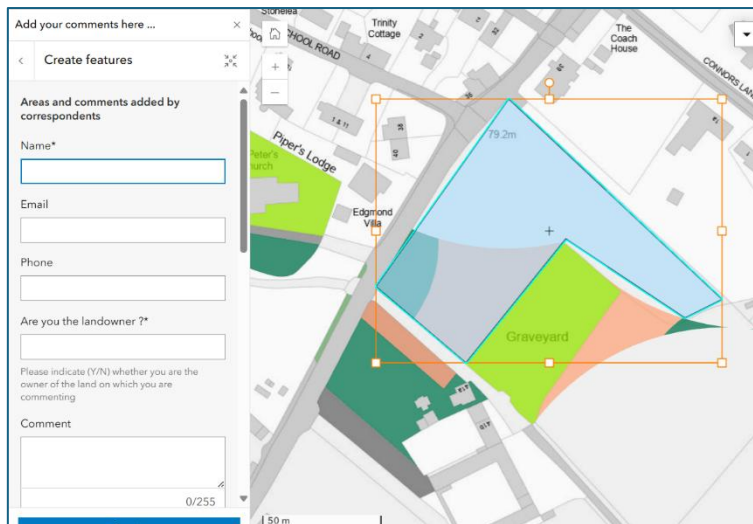
When opened, click on the polygon shape for fixed point entries like boundaries to a field, etc.

Alternatively you can use the “freehand” tool next box across, or simply put a square or circle in the locality for your comment.



If you have an area to make a comment on the map as a green space for nature recovery, it would be good to identify the specific area and comment accordingly, remembering that there is a letter count for each box.

Using the cursor plot the polygon points to create the area subject to comment.



Creating the polygon by a series of cursor drops on the map and then joining the cursor to the originating point will create the shape on the map.

An orange box will appear around the polygon area.

At the same time, it will bring up the respective comment boxes to the right of the mapped area.

Make the supporting comments.

Ensure the details are accurate before pressing the create button.

Continue to make your comments for the whole of your locality.

Ideally those that are in the best position to make areas specific entries are those that run or own the feature.

It would be good for all parties to ensure your local groups have sight of the LNRS consultation document to ensure that we capture as many comments as possible and to assist with the ground truthing of the LNRS map.