

Pontesbury Festival

27 - 29 June 2025

There will be plenty of music during the festival.

- We kick off with a Jamming Session in the Nags Head on Thursday 26th from 7.30pm
- Tin Soldiers and Val Sinclair will be performing at The Public Hall on Saturday 28 June; 7.30pm...
- ...and on Sunday 29th June there will be a 1940's Tea Dance at the Public Hall 2.30pm - 4.30pm

Details of the Public Hall events are inside the newsletter

- tickets on sale now

Lots more things being planned so please save the dates.

For more details contact:

rectorpontstip@gmail.com
walshjanet601@gmail.com



Speed Camera Project Update

As reported in previous newsletters, the parish council is committed to working with our partners to reduce speeding. In 2022, the Safer Speed Shropshire ANPR camera partnership was established, working with the police and our A488 neighbours, Minsterley PC and Hanwood PC to tackle speeding. The ANPR system has been successful in reducing speeds.

The parish council now has the results of the latest monitoring of speeds:

For the month ended December 2024, in Hanwood, depending on the time of day, 71% to 88% of vehicles passing the camera were travelling at speeds of under 35mph. For comparison, in Minsterley between 83 and 100% of vehicles passing the camera were travelling at speeds of under 35mph, and in Pontesbury between 87 and 100% of vehicles. This data has been passed to the police so that they can identify times of day to go out with their Trucam device and issue speeding penalty notices to those speeding.

On a quarterly basis, we are also working to identify "serial speeders" - these are drivers who pass the cameras at over 50mph on multiple occasions. The quarterly data for October to December 2024 has been sent to the police, with the worst offenders being focused on. The police are able to take action on this as they consider appropriate.

We are very pleased to be working with the police on this project, and will be providing regular reports on enforcement in future newsletters.



DEADLINE for May 2025 issue is: Friday 11th April 2025

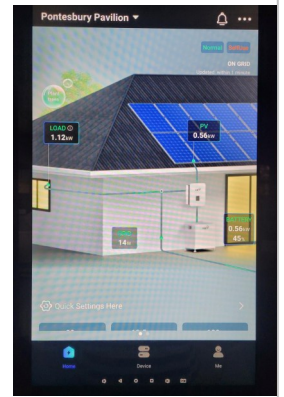
Coloured copies of the newsletter can be read at www.pontesburyparishcouncil.org.uk/pontesbury-newsletter

People from outside the Parish are interested in what's going on in our vibrant parish, so please bring your newsletter back to the Pavilion to be reread. Many thanks

Pontesbury Parish Council

Solar panels

We are delighted to report that the solar panels are now up and working on The Pavilion roof and already making a difference to the energy bills for the building. If you are interested there is a plasma screen in The Pavilion which displays how the panels work (see right) and a second screen which shows the amount of kWh solar energy we have made, how that has impacted on the amount of electricity we are taking from the Grid, along with how the solar PV cells are making the Pavilion more or less self-sufficient for electricity. The Parish Council also purchased some batteries, so any solar energy we are unable to use we are saving in the batteries for those days when there is not so much sunshine.



The Annual Parish Meeting took place at Pontesbury Public Hall on Monday 10th March where local groups gave their annual report. Cllr Fletcher wished to thank all of the many volunteers that are

involved with providing so many opportunities for the local community from repairing footpaths, to great library activities, to running village halls and activities for young people. Cllr Fletcher also thanked all of the councillors who help to run council services, some of whom will be standing down in May this year and have provided many years of service. All the reports are available on the parish council website. www.pontesburyparishcouncil.org.uk

The next Parish Council meeting will be held on Monday 14th April at 7.30pm at The Pavilion.

The next Planning Committee meeting will be held on Monday 7th April at 6.30pm at the Pavilion. Please contact Deputy Clerk deputy@pontesburypc.org.uk if you would like to attend and/or raise any issues.

Contents:

- Pg 1** - Pontesbury Festival
- ANPR Camera Update
- Pg 2** - Pontesbury PC Update
- Climate Fresk Feedback
- Pg 3** - What's On @ The Pavilion
- Pontesbury Library Owl
- PLANT SALE
- Pg 4** - Friends of Pontesbury Library
- Pg 5** - Community Good Neighbours
- Minsterley Meadows Celebration Day
- W Shrop Flower Club
- Probus Club
- Pg 6** - Church services/events
- Easter Events
- Pg 7** - Pontesbury WI
- Pontesbury Women's Club
- Church Tea/Coffee events
- St George's Messy Church
- Pg 8** - St George's VE Day
- Marton VH Film
- Victor & Albert, Arts Alive
- Festival Musical Info
- Pg 9** - u3a
- Habberley Film Night
- Shrewsbury Brass Band
- Pg 10** - Community Food Garden
- Pont Gardeners Assoc.
- Pine Martens in Shropshire
- RVCWG Walk dates
- Pg 11** - Longden Tennis Club
- Monday Badminton Club
- The Bog Visitor Centre
- Pg 12** - Getting Christened
- RVCWG Walks April
- Pg 12-15** Adverts
- Pg 16** - Dates for your diary

Climate Fresk A lively afternoon was had at The Pavilion on Saturday 15th March at the Climate Fresk. The Fresk involved looking at the causes and effects of climate change on the planet in terms of the impact on all species including humans. We worked in groups to create a visual collage which was really effective as a reminder of the urgency of the changes we need to make. We also spent some time thinking about simple actions we could all make, such as the following ideas:

- Keep electrical products for at least 7 years
- Get rid of private vehicles or restrict use and use public transport more
- Eat green or at least reduce red meat consumption in particular
- Dress retro – restrict the purchasing of new clothing items
- Holiday Local or restrict flights to one each 3 years
- Change the system – e.g change to a green energy provider, make green investments

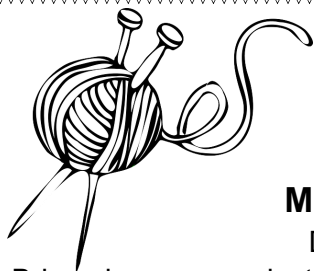
More information on these and other actions you can take that collectively make a big impact can be found at www.takethejump.org

The Fresk was funded by Marches Energy Agency, so a big thank you to them and the three trained facilitators who took us through the day.



the PAVILION

Pavilion News April 2025 - What's On



We hope to see you at the new time for

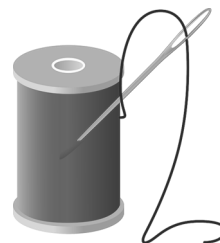
'Get Creative Group':

at The Pavilion from 2-4pm on

Monday 7th (21st is Easter Monday) April 2025

Drinks and biscuits are provided and there is no charge.

Bring along any project you are working on and have a chat with fellow creators. Everyone welcome.



Rhyme Time



Thursday 10th April 2025

at 2pm to 2.45pm

Pontesbury Library @ the Pavilion

Rhymes, stories and songs for
children under five years old

Pontesbury Carers Support Group

Friday 25th April 2025

Join us in a relaxed and informal meeting
where we share information and chat with a
cuppa and cake, starting 10.30am. It's all free
with experts on hand to answer questions.



Pontesbury Dementia Support Group
Alternate Wednesdays in the Pavilion

2nd, 16th & 30th April 2025
at the new time of 2- 4pm

April in the Library Firstly, I have a confession. As some of you may have noticed the Very Hungry Caterpillar was actually 56, not 50. We did however celebrate the VHC day on 20th March, with crafts, colouring and cake! Don't worry if you missed out on all the crafting fun in March, there will be more crafting and an Easter 'egg' hunt in the library during the school holiday. All free!

The Lily Chitty travelling exhibition will be on display this month, kindly loaned by Shrewsbury Museum Young Collective. 'Lal' was an Archaeologist and Antiquarian. For those who missed the display and talk in November 2023 it is another chance to find out about Pontesbury's inspiring and interesting resident.

The current book display for adults is a collection to inspire those entering the Pontesbury Festival Writing Competition, with some writing tips and local themes. Rhyme Time is on 10th April at 2pm. Come along for singing, dancing, marching and even a bear hunt. Happy Easter from the Library Owl.



PLANT SALE

Saturday 3rd May 2025

10am to 1.00pm

Pontesbury Library, The Pavilion

**PLANTS, SEEDLINGS, GARDENING
PRODUCTS & MAGAZINES**

**TEA, COFFEE & CAKE
& TOMBOLA**

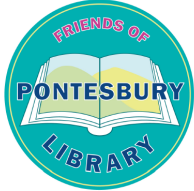


Donations of plants, cakes, and tombola prizes are most welcome during library opening hours and from 2pm and 4pm on Friday 2nd May. Plants can also be left from 9am -10am on Saturday 3rd May, the morning of the sale.

Further information from pontesburylibrary.co.uk
Facebook: Use Pontesbury Library
yvonne@pontesburylibrary.co.uk



For all Pavilion enquiries please contact Anna at: admin@pontesburypavilion.co.uk

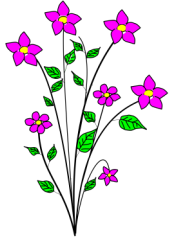


News from the Friends of Pontesbury Library

PLANT SALE

The hugely popular Spring Plant Sale is on May 3rd, 10am – 1pm in the Pavilion Garden.

All donations of plants, cuttings and seedlings will be most gratefully received. Please deliver to the library during opening times, or on Friday 2nd May 2 till 4pm Or from 9 till 10am on day of sale. Details on the poster on the previous page. Not to be missed. Do come!



FOPL AGM

The FOPL AGM is on May 22nd at 6.30 in the library. Nicky Green will give a talk about the Severn Hospice. Fopl has a big membership and we need a quorum for this meeting. If you are unable to attend, please fill in a Proxy form, available in the library or on the website. pontesburylibrary.co.uk

CREATIVE WRITING COMPETITION

Time to sharpen your imaginations and your pencils! At the March coffee morning the u3a creative writing group entertained with stories and poems to celebrate the launch of the Festival Short Story Competition, which is open to all, children and adults. See details on the poster.

LOTTERY WINNERS

The March lottery winners drawn at the Coffee Morning were:

R & J Pither [number 31]

P. Dunn [number 43]

S. Crowther [number 124]

For a little monthly flurry of excitement lottery tickets are just £1 per ticket per month - £12 (or more) for the year, raising money to help keep our library. Forms available at the library and on the website.



COFFEE MORNING

Next Coffee Morning Saturday 5th April
10.30-12.30

LILY CHITTY

The Lily Chitty Touring Exhibition and a short film will be in the library from 1st to the 30th April, together with the 2023 library exhibition, Find out all about this interesting celebrated former resident of the village.

Please keep supporting our library. It is such a valuable asset to the village and provides much more than just books.

Pontesbury Festival
Writing Competition

Maximum 500 words
with no lower limit

Closing date
Saturday 31st May

*It happened in
Pontesbury.....*

Photo credit — Philip Bradley

Writing style is up to you — let your imagination fly!

Entries welcome from all ages with prizes for both
adult and children's age categories

Organised by

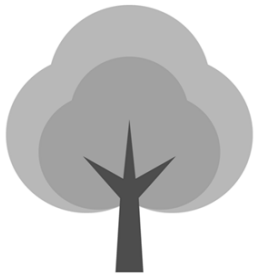
Friends of
Pontesbury Library

Full details and entry forms from
Pontesbury Library or online at
pontesburylibrary.co.uk

Pontesbury Library
1st to 30th April 2025

**DISCOVERING
LILY CHITTY**

Exhibition and film about the pioneering work of archaeologist and former
Pontesbury resident Lily Chitty, curated by the Young Collective from
Shropshire Museums



Community
Good
Neighbours
Pontesbury & Rea Valley District

News & Events

April 2025



Future Events For all upcoming events & updates please view our Facebook page.

Coffee Morning - Friday 11th April 2025 All are welcome to come along
10:30am to 12:00pm at The Plough Inn

Gentleman's Club Play cards, read the paper and catch up with other men. Now running fortnightly Call Rob Davies on 07720 010353 for more info.

..... other community news

West Shropshire Flower Club

In a change to the programme we had Lyne Rowlands demonstrate earlier than expected at our February meeting. Flowery Adventures gave a floral flavour of the places she had visited. Starting off close to home, growing up in Ellesmere and north Wales in the great outdoors was her parallel design of a hedgerow scene. Stocks, tulips, daffodils and gerbera poking above dense greenery. She then told us about her research trip as part of her studies to India, flowers in bright colours, of varieties bursting from a rattan basket gave a sense of the saris, spices, noise and chaos. Egypt was an elegant and simple linear arrangement of scarlet gerbera within dramatic foliage including rolled aspidistra and clipped palm leaves. The grey foliage of eucalyptus and eryngium, along with snowy umbels of ammi and white carnations started off the journey to Iceland, along with the controversial addition of white headed ornamental cabbage. The final arrangement was her unexpected trip to Japan to sell clotted cream! This was a pedestal arrangement using a small milk pail, delicate pink ranunculus and matching tulips were placed within exotic looking foliage of cut fatsia leaves and eucalyptus. The crowning glory was the main section of a pale pink cymbidium orchid placed centrally, surrounded by the excess flowers mounted in tubes.

All meetings at Westbury Village Hall and start at 7.30pm, visitors welcome £10

Wednesday 23rd April – Cynthia Preston Jones – Dedicated follower of fashion

Wednesday 28th May – Jane Cowan – Animal magic

Wednesday 25th June – Visit

Wednesday 23rd July – Sioned Hughs – It's a wonderful world

MINSTERLEY MEADOWS CELEBRATION DAY

Minsterley Parish Hall
Friday 25th April from
12 noon

Come and find out about
Minsterley Meadows and
join in an afternoon of
celebratory fun with
activities for families.

12 noon: Introductions & short talks
1pm: Buffet lunch
1.30pm: Family fun activities in the
main hall and escorted walks through
the meadows to see fabulous Green-
Winged Orchids

Email:
conference@middlemarchescommunitylandtrust.org.uk

<https://middlemarchescommunitylandtrust.org.uk>
www.marchesmeadowgroup.com

Middle
Marches
Community
Land Trust

Marches Meadow Group

Rea Valley Probus Club

All meetings are at Arscott Golf Club, on the second Wednesday of each month at 1pm. For further information and contact details please visit our website, www.reavalleyprobus.org.uk.

Next meeting: 9th April 2025

St. George's Church

www.st-george.org.uk



Services and activities for April 2025

2nd	2.30pm	Tea Service
6th	10.30am	Holy Communion
13th	10.30am	Dramatised Passion (Palm Sunday)
14th	7pm	Passover Supper
16th	7pm	Passion Praise
17th	7pm	Group Service Holy Trinity Minsterley (Maundy Thursday)
18th	10am	Messy Church
	7pm	Tenebrae
20th	10.30am	Holy Communion (Easter Day)
27th	10.30am	All Age Family Worship

Coffee Stop every Friday 10-12noon

Pontesbury Baptist Church

www.pontesburybaptist.co.uk

April Preachers

We have services twice every Sunday – at 10:30 am and 6:30 pm – where we sing hymns of worship, hear the Bible read, pray, and listen as God's Word is preached.

Morning Service Evening Service

Sun 6 th	10:30 am: Mike Wells	6:30pm: Mike Wells
Sun 13 th	10:30 am: Rob Jack	6:30pm: Mike Wells
<i>Good Friday 18th April</i>		
	11:30 am: Mike Wells	
<i>Easter Sunday 20th April</i>		
	10:30 am: Mike Wells	6:30pm: Martin Wells
Sun 27 th	10:30 am: Dave Bishop	6:30 pm: Rod Ward

CELEBRATE EASTER @ Pontesbury Baptist Church



GOOD FRIDAY 18th April

11:30 am

EASTER SUNDAY 20th April

10:30 am and 6:30 pm

You don't need to book ahead, just come as you are!

All are welcome!

Website: www.pontesburybaptist.co.uk

Address: Chapel Street, Pontesbury, SY5 0RJ

The Methodist Services April 2025

6th April 10.45 am with Church Members
13th April 10.45 am Rev Sheila MacInally
20th April 10.45 am with Rev Richard Hall
27th April 10.4(am. With Mrs Fay Spencer

PONTESBURY CONGREGATIONAL CHURCH SERVICES - April 2025

Sunday 6th	10am	The Deacons
Sunday 13th	10am	Rev. Debbie Martin
Sunday 20th	10am	The Deacons
Sunday 27th	10am	Rev. Debbie Martin

Tuesday's 10am Prayer Meeting and Bible Study
Wednesday's 10am Warm Space/Coffee and Chat

All are welcome

*April Services
Holy week to Easter Day*



St George's Church, Pontesbury

Sun	April 6th	10.30am Holy Communion
Sun	April 13th	10.30am Palm Sunday,

Sadly the Procession and play have had to be cancelled. This will be a normal service.

Mon	April 14th	7.00pm Passover Supper
Wed	April 16th	7.00pm Passion Praise
Friday	April 18th	10.00am Messy Church for families 7.00pm Tenebrae service

Sun	April 20th	Easter Day 5.30am Sunrise Communion at Lower Camp, on Pontesford Hill. 10.30am Holy Communion, St George's
-----	------------	---



Sun	April 27th	10.30am St George's Day Service.
-----	------------	----------------------------------





Free St George's Church, Pontesbury Free

Messy Church

Spring

First Thursday of the month
During Term Time
3.30pm – 5.00pm

For Families and friends to enjoy
stories, crafts, and fun

Free Followed by shared hot food Free

Further information contact:
Greg: 07902 794653 email: rectorpontstip@gmail.com
Or Mary: 01743 791069



A Welcome Brew

COMMUNITY DROP-IN

Tuesdays 10.30am - 12pm

A place to come along, grab a drink
and have a chat. Free refreshments
and activities.

All ages welcome




Welcome to The Tea Break



Cuppa, cake, and a chat

Wednesdays 2pm - 4pm

St George's Church
Pontesbury



theWI

INSPIRING WOMEN

Pontesbury WI

Pontesbury WI met on 10th March & we welcomed a very special guest, Joe Barnes from the Pontesbury Youth Project.

The

treasurer Mrs Shona Wood presented Joe with a cheque for £500 which will be used to benefit the young people of Pontesbury. Joe runs a youth café & also takes young people on trips away and holds youth drop-ins during holiday time. Joe will now use the WI donation to benefit the young people in his care.



Our second guest speaker was Phil Lambert, who told us fascinating information about Queen Mary's Dolls House. Phil enlightened us about the history of the house and how everything in



the dolls house was made by the best manufacturers as perfect replicas. The completed dolls house was exhibited in the Empire Exhibition during 1925 which showcased British workmanship. This amazing house had electricity, hot and cold running water and flushing toilets. This wonderful dolls house is

truly amazing.

Our next WI meeting will be held on Monday 14th April, our guest speaker will be Jacqueline While who will talk about Air Traffic Control. Pontesbury WI craft club will next be held on the 15th April at 10am at The Cock in Handwood.

If you would like to join the WI please contact our President Irene Windows on 01743791903 for further information.
Maxine Pittaway events organiser

Pontesbury Women's Club

If you would like an entertaining Tuesday evening come along to our meetings

Tuesday 8th April
AGM

Hot Cross Buns and Quiz

Tuesday 13th May
Strawberry Tea

Please book to come to this event.

PWC usually meets at 7.30pm on
The second Tuesday of the month
At Pontesbury Public Hall
Visitors and New Members are always

Deadline for May 2025 edition is Friday 11th April 2025 please send all articles, requests for adverts and event dates to deputy@pontesburyipc.org.uk.

**Celebrating
80th Anniversary of VE Day**

**Join us for a Sing-along
with St George's Choir**

**Saturday 10th May
In St George's Church
Pontesbury
12 noon - 2pm**

Soup and Sweet lunch available.

No Charge

**But a donation towards
the lunch, would be appreciated**

**Raising money to improve the church
sound system for the choir**

**More information from:-
Marianne McCall 0794433830
Barbara Norsworthy 01743 600476**

A Pontesbury Festival Event

PONTESBURY's FESTIVAL CONCERT

**Saturday 28 June 2025
7.30pm
Pontesbury Public Hall**



An extravaganza of music from

Tin Soldiers

**Marko Ivanovic
Val Marciandi
Les Parker
Rob Davies**

Val Sinclair

**with
James Taylor
Louis Meehan
Dave Briggs**



**Tickets £10
from
Hignetts, Pontesbury
Pontesbury Library**



**You are invited to bring
your own drinks and nibbles**



27-29 June 2025

As the Pontesbury Festival gets nearer numerous activities are in the planning, including the 40's-style tea dance which the Rea Valley Foodbank team is organising. A fun afternoon will be had and even if you don't dance ballroom, lindy hop or jive etc, you can just get on the dance floor and do your own thing. Alternatively, sit at your table, enjoy tea and cakes and watch the swing-dancers strut their stuff. Get into the spirit of things by dressing in 40's style clothes or uniforms (there are loads of ideas on-line), ie think land-girls, dungarees and head-scarves!! Prizes for the best dressed folk. Jacqui Evans and Nigel Bell are experts in running dances and they will be overseeing the event. Tickets are limited to allow for dance space so grab yours asap. Details on the flier above.

**arts
alive** **FLICKS
IN THE
STICKS**

**The Unlikely Pilgrimage
Of Harold Fry**

Cert: 12a - 108 mins



Fri 25th Apr - 7.30 pm

Marton Village Hall

**Admission: Adults: £5 Child: £2.50
Enquiries: 01743 792790 or 07810 230860**

**Film £5. Film + Fish/chips £10. (Fish & chips must be pre-ordered). Bar and refreshments available from 7.00 p.m.
All enquiries to 01743-792790 or 07810-230860.**

**Harold is an ordinary man who has passed through life, living on the side lines, until he goes to post a letter one day
...and just keeps walking.**

Starring: Jim Broadbent, Penelope Wilton, Monika Gossmann

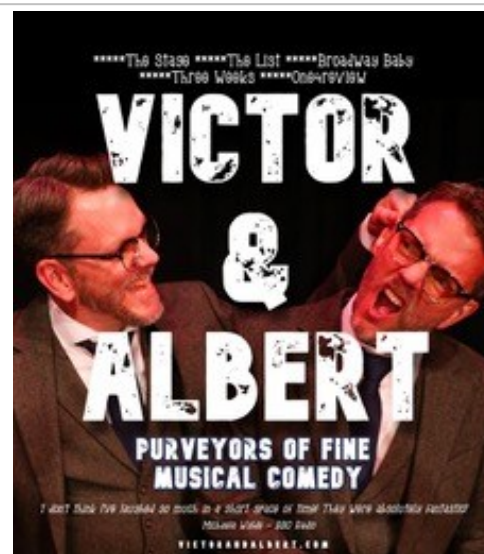


**W
H
A
T
'
S

O
N**

Join identical twins Professor Victor and Dr Albert for an evening of riotous comedy, audience interaction, original songs, games, mayhem and a sprinkling of magic. A good old-fashioned feel-good, two-man variety show brought kicking and screaming into the 21st Century: audiences agree that it is an immense amount of fun from start to finish! 'We all agreed we hadn't laughed so much in

years!' - Audience Member 'Your incredible talent, sense of humour and timing gave us a wonderful evening of non-stop laughter.' - Audience Member



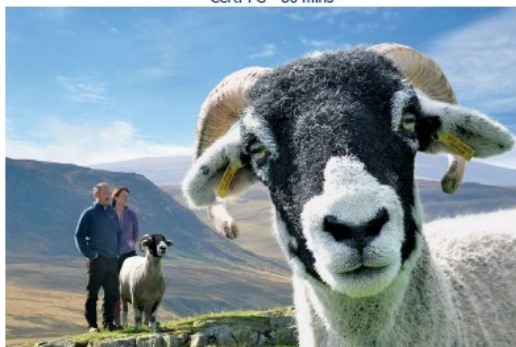
**Sunday 27th April, 7.30pm
Habberley Village Hall, SY5 OTP
Tickets £12 / £6
01743 790179 | www.artsalive.co.uk**

**arts
alive**

**Deadline for May 2025 edition is
Friday 11th April- please send all
articles, requests for adverts and event
dates to deputy@pontesburypc.org.uk.
Please send .jpgs or .png - no .pdf
please**

Addicted to Sheep

Cert: PG - 86 mins



Fri 11th Apr - 7.30 pm

Habberley Village Hall

Admission: Adults: £6 Child: £4

Enquiries: 07977 127161

Doors open at 7pm for 7.30pm start.

Refreshments: Licensed bar available, popcorn, tea/coffee and traybake.

Set in the North Pennines, an intimate portrait of a year in the life of tenant hill farmers Tom and Kay Hutchinson as they try to breed the perfect sheep. Through the sun, rain, sleet and snow, we watch the Hutchinsons toil away against the stark, stunning landscapes of North East England and witness the hard work it takes just to survive.

Starring: Kay Hutchinson, Tom Hutchinson, Esme Hutchinson, Jack Hutchinson, Hetty Hutchinson



Spring Concert

With special guest choir

DALE DIVA from Derbyshire

Saturday 5th April 2025, 7pm

at the Shrewsbury Golf Club,

Condover

Tickets available on the door

£12 (under 16s free)



learn,
laugh,
live



Guide Dogs

Learn all about the work of the Guide Dogs association, including the puppy walker programme and get the chance to meet some of the dogs.



OPEN MEETING

Members & non-members welcome

u3a

Pontesbury
& Rea Valley



pontesbury.u3asite.uk

April

16

Wednesday 2pm

Minsterley Parish Hall

A488, Minsterley, SY5 0EH

Refreshments available
Free entrance

Pontesbury & District Gardeners' Association

Spring is now underway and seed sowing can get going in earnest. Most people have their own preferred seed sowing medium, whether it be specialised seed sowing compost or their own recipes using various combinations of potting composts and inert material such as vermiculite or sand, or sowing directly into the soil. Whatever your choice we have material at the Trading Post that can help.

As we have mentioned several times previously, this and next month is the time for potatoes to be planted. Traditionally it was Good Friday when this happened, that day being the first one in the Spring when the workers had a day off. Easter falls a little late this year so you may not want to wait until late April!. There is still a danger of frost until the middle/end of May so look after tender plants and seedlings until then. If you don't have a greenhouse in which to shelter the smaller plants you can wrap them in horticultural fleece when frost is forecast.

Whether you are growing fruit and veg to eat or to show, or cut flowers for a vase in the house or to enhance the garden, then come along to the Trading Post to share your stories. Although we sell most materials to help you in the garden we also like to hear what works for you and to share it with those who are just starting with their first plot. So if you are experienced or a novice, please come along for a chat.

The Trading Post is situated in the Old Station Buildings on Station Road and we are there every Saturday from 9.30 to 12 noon.



**PONTESBURY
COMMUNITY FOOD
GARDEN**

LETS GROW!

SATURDAY 26TH APRIL

2.00 - 4.00PM

**COME AND HELP US PLANT UP
THE GARDEN**

**SEED, PLANT AND TOOL SWAP
OR DONATE**

**KIDS, COME AND PLANT PEAS AND FLOWER
BOXES FOR POLLINATORS (WITH AN ADULT
PLEASE)**

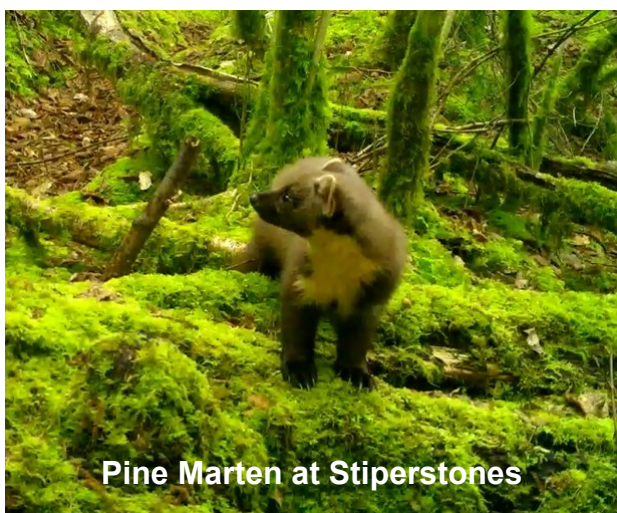
TEA AND CAKE

FREE PIZZA !!

**ON CRICKETERS
MEADOW GREEN AND
THE PAVILION**

CREATING A GREENER CLIMATE
SOS
SHROPSHIRE
SAVE OUR SHROPSHIRE

Shropshire Pine Marten Group



Pine Marten at Stiperstones

REA VALLEY COMMUNITY WILDLIFE GROUP

APRIL EVENTS

Wednesday 16th - 5.30pm - 7.30pm. Evening Walk at Brockton. Meeting at Brockton Car Park

Saturday 26th - 10am - 1pm. Wildflower Walk at Pontesford and Earl's Hill. A joint event with the RVCWG and Friends of Pontesford and Earl's Hill. Meeting at Pontesford Hill Car Park.



PINE MARTENS IN REA VALLEY

England's rarest mammal was presumed to be extinct in Shropshire but in 2015, for the first time in over 100 years, two pine martens were sighted in the Clun Valley. Following the excitement of this find, the Shropshire Pine Marten Group has been monitoring these enigmatic and elusive animals, with more areas checked and more martens seen on camera traps across the Shropshire Hills.

In 2018 the first pine marten was sighted on Pontesford Hill and more recently one was seen on a camera trap in woods above Snailbeach. Although surveys can be challenging, the best success for monitoring is to install camera traps in high density. This increases the chance of seeing one as pine martens mostly venture out after dark and live mainly high up in trees. They stick to narrow trails in woodland, of which there are potentially hundreds to choose from.

I am now hoping to learn more about the pine martens living around Pontesbury, Habberley and Minsterley and also to raise funds for more camera traps for this purpose. In order to succeed, volunteers are needed to help install and monitor the camera traps. The Rea Valley Community Wildlife Group (RVCWG) has indicated that they may have volunteers who can work with me on this. To have their support with this local project would be amazing. If anyone else out there is also keen to help, feel free to email: stuartwildlife@gmail.com Shropshire Pine Marten Project and RVCWG will be at the Pontesbury Festival (27th-29th June) so come along and see us on Saturday 28th June.

Sports & Activities

WHAT'S GOING ON? - Everything – that's what!!



- Walking Tennis - Fridays 11am
- Social Tennis – Fridays 9.30am
- 'Back on Court' – Free taster sessions
- Junior Coaching – Thursday afternoons
- Monthly Breakfast Tournaments
- Adult Group Coaching Sessions
- 'Court Cardio Fitness' – Thursdays 9.30am
- Club Night Social Tennis – Mondays 6.30pm
- 1-2-1 Coaching Sessions
- County Based League Matches
- Annual Quiz & Dinner
- **AND MUCH MORE TO COME!!!**

We offer a variety of annual memberships – New Members always welcome!!! Give us a try !!

For further details email 'longden.tennis@gmail.com', OR call 07710 472104

www.clubspark.lta.org.uk/longdentennisclub

Longden Tennis Club – SY5 8EX



THE BOG VISITOR CENTRE

reopens for the 2025 season on
Wednesday 9 April

The Stiperstones National Nature Reserve managed by Natural England presents a unique landscape of rocky tors and heath-land that has a rich natural history and geology. Lead and other minerals provided reason for centuries of human

occupation in which industry The Bog played an important part. It is a privilege and pleasure to pass on information of these aspects to visitors and to provide guidance on the range of walks, long and short, that are available for them to enjoy.

Our team of 'volunteers' are looking forward to welcoming visitors from near and far with information and refreshments. A wide range of local crafts are available to purchase, as are books, maps and walk leaflets.

Staffing The Visitor Centre

'Volunteers' work their first 20 hours voluntarily and additional hours after that are paid at the minimum rate for those who chose to be paid. **Our pool of volunteers ranging in age from 16 to 80+ needs expanding and we are looking for people who would enjoy interacting with our visitors.** New recruits receive comprehensive training during their induction period. If interested please email Lin Brown. (Contact details below)

School students make a considerable contribution to the successful operation of the Centre at weekends and during the holidays and are paid for all their working hours at the appropriate rate for their age. Students interested in joining the team please contact Lin Brown. (see below)

Opening hours Wednesday – Friday 12 – 4pm & Saturday and Sunday 11am – 4pm

Contact details Secretary Lin Brown 01694 781634 bogcentre@hotmail.co.uk

Monday Night Badminton Club

£25 per term

Mary Webb School Pontesbury
SY5 0TG

7-9pm
in the Sports Hall.

A fun social club, a small amount of
Badminton experience required.

Members must be 16 or over.

Please come along and give this
fun club a go.

Deadline for May 2025 edition is Friday 11th April - please send all articles, requests for adverts and event dates to deputy@pontesburypc.org.uk. Please send all posters, pictures and adverts as .jpg or .png documents, please do not send .pdf. Many thanks

GETTING CHRISTENED Did you know that you can get your child Christened at St George's absolutely free? There is no charge for the service in this very special place.



Christenings provide joyous family occasions and the very best start for your little one's journey through life. Services are informal and generally separate from the main service, which means that there is no upper limit on the number of guests you can invite. We include stories, songs and participation for children.

For those who do not feel able to make Christian promises on behalf of their child, there is the option of a dedication service.

Services are usually held at 12 noon on Sundays, but there is some flexibility around this if the need arises. Why not come along to St George's on any Sunday morning at 10.30, and our baptism team will be pleased to help you.



REA VALLEY COMMUNITY WILDLIFE GROUP

MONTHLY WALKS AND EVENTS : APRIL 2025

Wednesday 16th April - Monthly Walk

5:30pm - 7:30pm

Brockton Car Park - native.broadcast.fully

Join our friendly Rea Valley Community Wildlife Group (RVCWG) at our April monthly walk (our first evening walk) providing an opportunity to discover local flora and fauna together.

Free to attend and no booking required

Please note that there is no designated leader for these monthly walks. A meeting point is listed for each walk and the group will decide together on the day where they would like to walk.



Saturday 26th April - Wildflower Walk at Pontesford & Earls Hill

10am - 1pm

Pontesford Hill Car Park - hoot.signed.cobbled

Joint event with the RVCWG and Friends of Pontesford and Earls Hill.

Explore Pontesford Hill & Earls Hill together and learn all about the wildflowers growing there from a local botanist.

This event is free, but donations are welcome.

Pre-booking is required by emailing reavalleycwg@gmail.com



Wombrook Home Maintenance

Improvements, repairs and maintenance, in and around the home.

Decorating. Tiling.
Carpentry. Plumbing.
Kitchens. Bathrooms.
Fences.

Odd jobs & more.

All work is fully guaranteed and insured.

References willingly supplied – just ask.

Call Steve Percival: 01743 860712
0794 0894 378



CLEAR AS A BELL

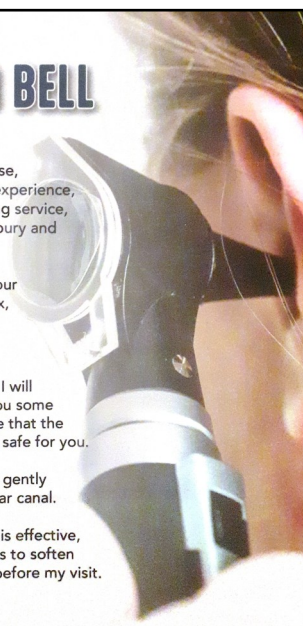
I am a former community nurse, with more than thirty years' experience, offering a mobile ear syringing service, in your own home, in Pontesbury and the surrounding area.

If you have a problem with your hearing, due to impacted wax, please give me a call.

Before I carry out treatment, I will examine your ears and ask you some standard questions, to ensure that the treatment is appropriate and safe for you.

I will be using a machine that gently pulses warm water into the ear canal.

To ensure that the treatment is effective, you will need to use ear drops to soften any wax, for at least a week before my visit.



07933 382833

FULL PROFESSIONAL INDEMNITY INSURANCE AND DBS CHECKED



Phone or text 07532 367777

for a competitive estimate. Minor repairs also undertaken.

High quality, reliable and friendly service.

Fully insured.



Facebook

www.facebook.com/groups/reavalleycwg



More Information

www.shropscwgs.org.uk/rea-valley-wildlife-group/



**JOIN US
TODAY!**

Email: reavalleycwg@gmail.com



Active and vibrant Whatsapp group also available

Deadline for May 2025 edition is Friday 11th April - please send all articles, requests for adverts and event dates to deputy@pontesburyipc.org.uk. Please send all posters, pictures and adverts as .jpg or .png documents, please do not send .pdf. Many thanks

DENTURE PROBLEMS?

Broken? Don't fit? Worn out?

For a fast, professional solution to your denture problems call Neil Phillips. Home visits available.

01743 791 354 or mobile 07946 288412



Presence of Mind

Body & Spirit
WELLNESS ROOM

A beautiful new healing space has opened in Pontesbury. Located in the Connections Emporium and Post Office building. Please feel free to call in and meet Krystyna. She has been a physical and emotional therapist for over 30 years, trained in many different fields of therapy. So if it is an aching back, anxiety, stress or one of the many maladies we humans suffer – or just pure relaxation, pop along have a chat and book a session.

See Facebook Energetics Engineer or Connections/ Pontesbury Post Office for updates, special offers and workshops.

Call Krystyna on 07876238843



Carpet and Upholstery Cleaning Specialist

IAN JONES
Telephone: 01686 639 591
Mobile: 07831 332226
Email: clearlythecleanestian@gmail.com

2, Cae Melyn,
Tregynon,
Newtown,
Montgomeryshire.
SY16 3EF

Touch, See, Smell and Feel the difference

Rachel Abrams
Passionate about providing a quality service

PRIVATE CARE PROVIDER



Providing friendly, reliable & quality Care within our local community.

*Qualified *Over 20 yrs of experience *A REAL person centred approach *Set call times.

Working in partnership with likeminded Private Carers to ensure all calls are covered.

Call Rachel on-
07599 374209



Open from 5:30pm – 10pm

Special 4 Course Banquet Night Every Sunday
£15.95 per person

Buffet Night Every Tuesday £15.95

We are closed Mondays except bank holidays

Private Parties can be catered for

01743 3860229

www.leacrosstandoori.co.uk



Marc Simms

Painting and Decorating

All interior and exterior work
undertaken

Local, professional and
efficient service

Call Marc on
07875 168744



PHIL GRIFFITHS Local Plumber

Tap Replacement and
Plumbing Repairs undertaken
New Taps supplied and fitted

Full Range available

Established for 35 years

Tel: 01743 790046

Mobile: 07970 010148



Deadline for May 2025 edition is Friday 11th April - please send all articles, requests for adverts and event dates to deputy@pontesburyipc.org.uk.



HIGNETTS
of Pontesbury Ltd
est. 1919



Retailers of Quality Foods, Fresh Meat, Fruit & Vegetables

Award winning butter buns. Fresh bread, pies and cakes.
A range of Sausages & Burgers made to our own to our own recipes.

Seasonal plants.

Groceries at competitive prices.



01743 790228
www.hignetts.co.uk



Malehurst Industrial Estate, Malehurst, Pontesbury, SY5 0EQ

Modern Industrial Buildings To Let –
Various Sizes Available

Ideal For Start Up or Existing Businesses

Modern Insulated Units

Self Storage Units & Outside Storage Also Available

Telephone 01743 791744

mark@malehurstindustrialestate.co.uk

Physiotherapy and Acupuncture Pontesbury

01743 872375

01743 790036

Contact us for prompt assessment & treatment.

We aim to alleviate pain & restore normal function to joints, muscles and nerves to improve your quality of life.

Private Occupational Therapy service also available.

Helen Mitchell

BSc MCSP HCPC

Olwen Lethbridge

MCSP AACP HCPC

Martin Walters
High Quality Traditional Joiner ...
Replacement Doors & Windows
Accurate copies made
Arched and curved work
Listed building joinery
...
Joinery Repairs
Remove rot or damage and splice in
new timber
Replace broken ironmongery
and sash cord
Adjust ill-fitting doors and windows
...
Upgrades
Draught exclusion
Double glazing
...
30+ years trade experience
...
Telephone: 07813 477720
e-mail
martin.walters@phonecoop.coop

Monsoon Window Cleaning Services

– your local window
cleaner



Mike Morgan

01743 791013

07906735975



RJD BRICKWORK SERVICES

All aspects of Brickwork and
Stonework: Garden Walls:
Brickwork for Extensions and New
Builds: Renovation work - Fireplaces
Time served bricklayer with 30 years
experience

Full Public Liability Insurance

Tel: 01743 821507 Mob:
07740607064

Email: info@r-j-d.co.uk

Free consultation and quote



Boiler service, breakdown and installation

Landlord's gas safety certificates

And all plumbing work

Telephone: 07974 268627

email: info@richardhornerplumbingandheating.co.uk

website: richardhornerplumbingandheating.co.uk



Company number 8612915 Vat No. 899 787 414



Ben Morris Electrical Ltd

ELECTRICAL CONTRACTOR
NAPIT & TRUSTMARK registered



BEN :- 07966 788791
QUOTATIONS:- [JOHN] 01743 792013
www.benmorriselectrical.co.uk

REWIRES / UPDATES
EICR TEST REPORTS / FAULT FINDING
FUSE BOARD UPGRADES
EXTRA SOCKETS / LIGHTS ADDED
ELECTRICAL HEATING SYSTEMS
PART 'P' REGISTERED
COMPETITIVE HOURLY / DAILY RATES
ESTABLISHED 2007
VAT FREE

Paul Hamer
Pontesbury Handyman



Call: 07497 384641
Email: pjhamer12@gmail.com

Tiling, fencing, garden services, stone wall
repairs, decking and general home maintenance



Hair and Nails by

Serenity

Bennetts Business
Centre, Carver
Street, Pontesbury

Tel: 01743 211159



Simplifying
Computers
& Technology
in Shropshire
shroptech.com
Tel: 01743 790968

ShropTech help local businesses and
home users with:

- Backing up your data – e.g. emails and photos from your computers and mobile phones, etc. – the best protection from ransomware
- Computer upgrades and repairs, no fix, no fee
- Fixing internet / WiFi problems
- Data recovery, transfer to new
- Upgrading to Windows 11
- Domain, Website and Email from £49 per year, £299 setup

**We sell 3 grades of Electronics –
New, Open Box or 2nd User, all
minimum 1 year warranty**

- **Laptops, Desktops, TVs, Mobiles,
Tablets, Security Cameras, WiFi**

Email us: office@shroptech.com

Data Protection Act 2018: Shropshire Technology
is registered with the ICO, your data is safe with us



Mr Wasp Pest Control Services

- * Professional Local Service
- * Unmarked Vehicle
- * Service Contracts Welcome
- * Rats * Mice * Squirrels
- * Wasps * Fleas * Insects
- * Domestic & Commercial

Tel: 07908 205881

www.mrwasp.biz info@mrwasp.biz

Painter & Decorator

DWS Property Services

**All interior & Exterior
Work / Fully Insured /
Free Competitive
Estimates**

dugloussteele@hotmail.com

07860 528943

Physiotherapy, but not as you know it!

Relieving & preventing injuries, aches, pains
weakness and stiffness

By transforming how you hold, move
and use your body
As you're naturally designed

Move with strength, confidence and ease
Consultations | Classes | Online courses | Speaker



www.rachelkiliphysiotherapy.com
Habberley

rachel@rachelkiliphysiotherapy.com
07714278760



You could see an advert for your company in this newsletter. If you would like to advertise your business in the Pontesbury Parish Newsletter please get in touch with Nicki, deputy@pontesbury.org.uk. The costs of advertising depend upon the size of the advertisement and where you live or where your business is based.

You can advertise for one month to a full year of 10 months (there is no newsletter in August and one newsletter for December/January) - you choose how many adverts.

APRIL 2025 DIARY

12Date	Time	Event	Venue
Regular Weekly Events			
Every Mon	6.30-7.30pm	Pontesbury Runners (advanced/intermediate)	Meet corner of Brookside & Minsterley Rd
Every Mon	6.00-7.15pm	Yoga	Ponts Congregational Church
Every Mon	7.00-9.00pm	Monday Badminton Club	Mary Webb School, Sports Hall
Every Tue	10.00 - 12.00	Rea Valley Foodbank	Holy Trinity Minsterley
Every Tue	10.30-1200	A Welcome Brew	Baptist Church
Every Tue	2pm	Tai Chi	Public Hall
Every Tue	8—9 am	Pilates for Core Strength	Public Hall
Every Wed	10.00-12.00	Sea Change Drop-In for parents/carers of under 5s - free session with refreshments	Pavilion - Term-time only
Every Wed	10.30-12.00	Coffee/Chat and Fellowship	Pontesbury Congregational Church
Every Wed	2-4pm	Tea Break - tea, cake and a chat	St George's Church
Every Thu	10.00-12.00	Rea Valley Foodbank	St George's Church
First Thu	3.30-5pm	Messy Church Spring	St George's Church
Every Thu	7-9pm	Rea Valley Woodcarvers (Term-Time Only)	Minsterley Parish Hall
Every Thu	7-9pm	Badminton Club	Mary Webb School, Sports Hall
Every Fri	10.00	Walking Local Footpaths	Meet at School Green
Every Fri	10.00-12.00	Coffee Stop	St George's Church
Every Sat	7.30pm	Whist Drive	Yockleton Village Hall
Monthly Events			
Wed 2nd, 16th / 30th	2-4pm	AGE UK Dementia Support Group	Pontesbury Pavilion
Thu 3rd	3.30-5.00pm	Messy Church	St George's Church
Sat 5th	10.30 -12.30	FoPL Coffee Morning - "Lily Chity Exhibition"	Pontesbury Pavilion
Sat 5th	7pm	Shrewsbury Brass Band Spring Concert	Shrewsbury Golf Club, Condover
Mon 7th	2-4pm	Get Creative Group - free & refreshments	Pontesbury Pavilion
Mon 7th	6.30pm	Parish Council Planning Committee Meeting	Pontesbury Pavilion
Tue 8th	7.30pm	Pontesbury Women's Club	Public Hall
Wed 9th	1pm	Rea Valley Probus Club	Arscott Golf Club
Thu 10th	2pm–2.45pm	Rhymetime for children 0-4years/parents	Pontesbury Library in the Pavilion
Fri 11th	10.30-12.00	Good Neighbours Coffee Morning	The Plough, Pontesbury
Fri 11th	7.30pm	Film Night - "Addicted to Sheep"	Habberley Village Hall
Mon 14th	2pm	Pontesbury WI	Public Hall
Mon 14th	6.30pm	Pontesbury Parish Meeting	Pavilion
Wed 16th	2pm	u3a talk "Guide Dogs for the Blind"	Minsterley Parish Hall
Wed 16th	5.30-7.30pm	Rea Valley Community Wildlife Evening Walk at Brockton	Meeting at Brockton Car Park W3W native. broadcast.fully
Fri 18th to Mon 21st		EASTER WEEKEND - see pg 6 for Church Services	
Wed 23rd	7.30pm	Flower Club - "Dedicated Follower of Fashion"	Westbury Village Hall
Fri 25th	12 noon	Minsterley Meadows Celebration Day	Minsterley Parish Hall
Fri 25th	10.30-1200	Carer's Group - FREE Information, chat & tea	Pavilion
Fri 25th	7pm	Flicks in the Sticks "The Unlikely Pilgrimage of Harold Fry"	Marton Village Hall
Sat 26th	10am - 1pm	Wildflower Walk, Pontesford & Earls Hill	Meet at Pontesford Hill car park W3W hoot.signed.cobbled
Sat 26th	2-4pm	Pontesbury Community Food Garden "Let's Grow" - FREE Pizza	Community Food Garden, Cricketers Meadow Green & The Pavilion
Sun 27th	7.30pm	Victory & Albert - Purveyors of Fine Musical Comedy	Habberley Village Hall
May 2025			
Sat 3rd	10.30-12.30	FOPL Plant Sale	Pontesbury Pavilion
Sat 10th	12.00-2pm	VE 80th Anniversary Celebrations with the choir	St George's Church